

# Works Of Art

2014 - 2015

by Glen River

## The Chakra Energy Series

Chakra is the Sanskrit for "disc" or "revolution". This describes centers in the body within which energies or "energy centers" transform. This idea is first recorded in some of the Hindu Upanishads. Chakras are found in sanatan/Hindu and tantric/yogic traditions and called Chi in traditional Chinese medicine. Chakras are part of the subtle body, and meeting points through which the life force (prana) move. The notion of energy as an underlying web to objects has been a consistent influence on my art. With the Chakra series I look for archetypal symbols of primal energies. I find these paintings excellent to ponder while practicing Tai Chi, or Qigong.

The Chakra Energy series combines the abstract quantum concept and the figurative world. The formation of persona is effected from intersecting field-forms depicted by energetic patterns and an iconic formative symbol. These strive for the balance of universal dualities. Energy and matter, positive and negative, gravity and angular momentum, Yin and Yang, individual and totality.

Scroll Art – Acrylic on Canvas

Acrylic offers the virtue of flexibility and fast drying time. I have developed a practice of layering solid painting and glazes. I take advantage of these qualities to re-work the image to a harmony of concept. Influenced by Flemish and Venetian glazing methods, the combining of classic and contemporary methods seems in keeping with the vision of Yin and Yang funneled into a human form.

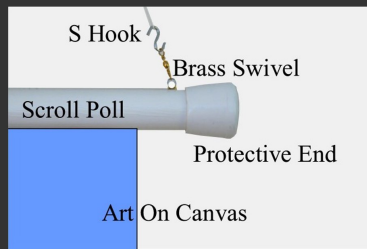
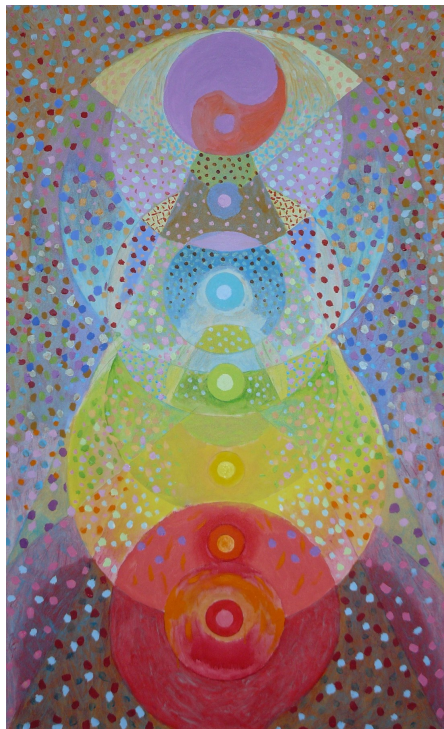
S Hook

Brass Swivel

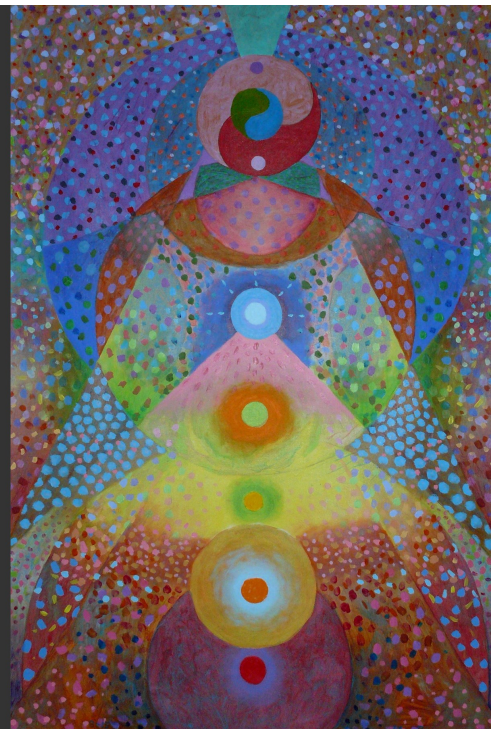
Scroll Poll

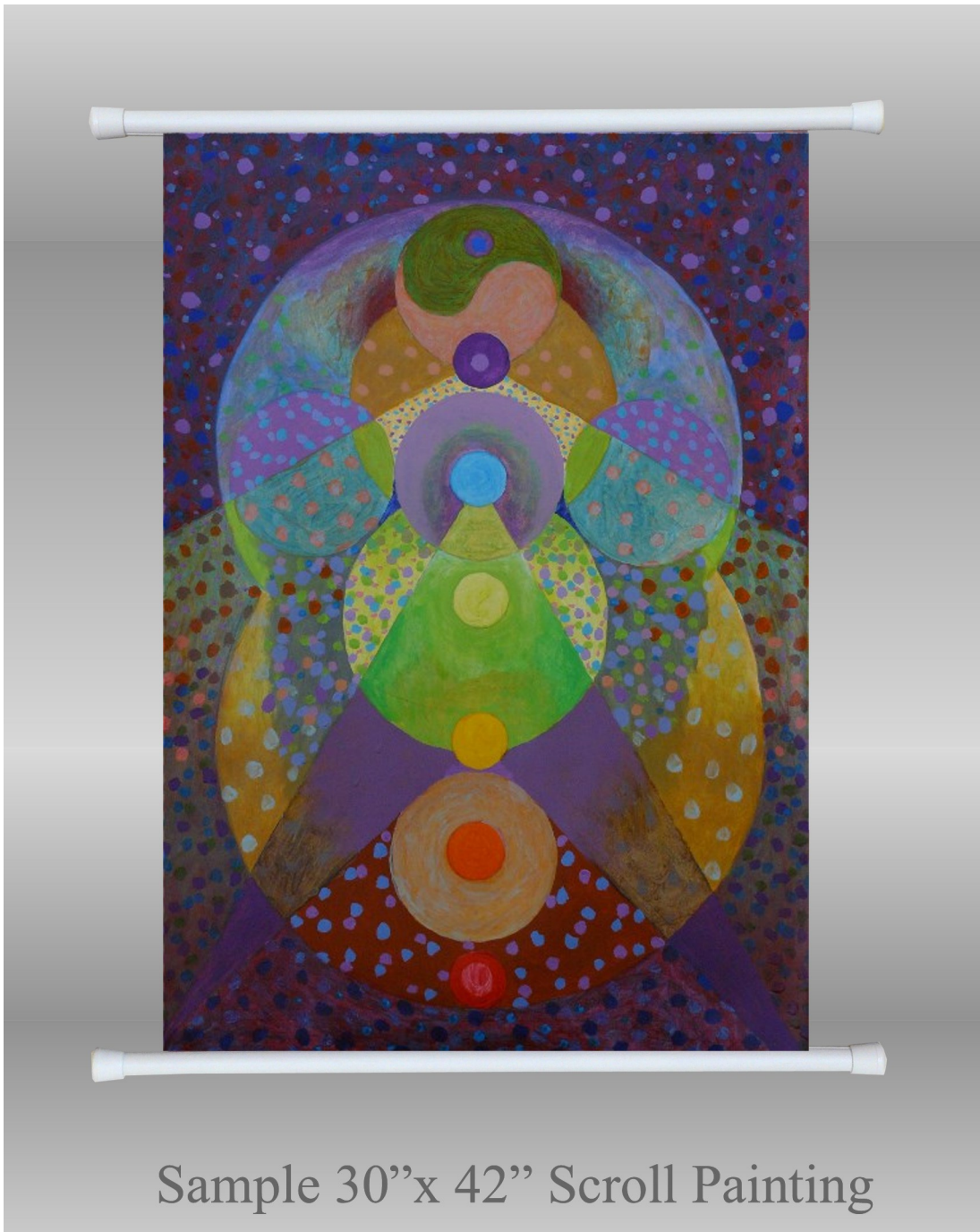
Protective End

Art On Canvas



[GlenRiver.com](http://GlenRiver.com)  
[river@glenriver.com](mailto:river@glenriver.com)





Sample 30"x 42" Scroll Painting

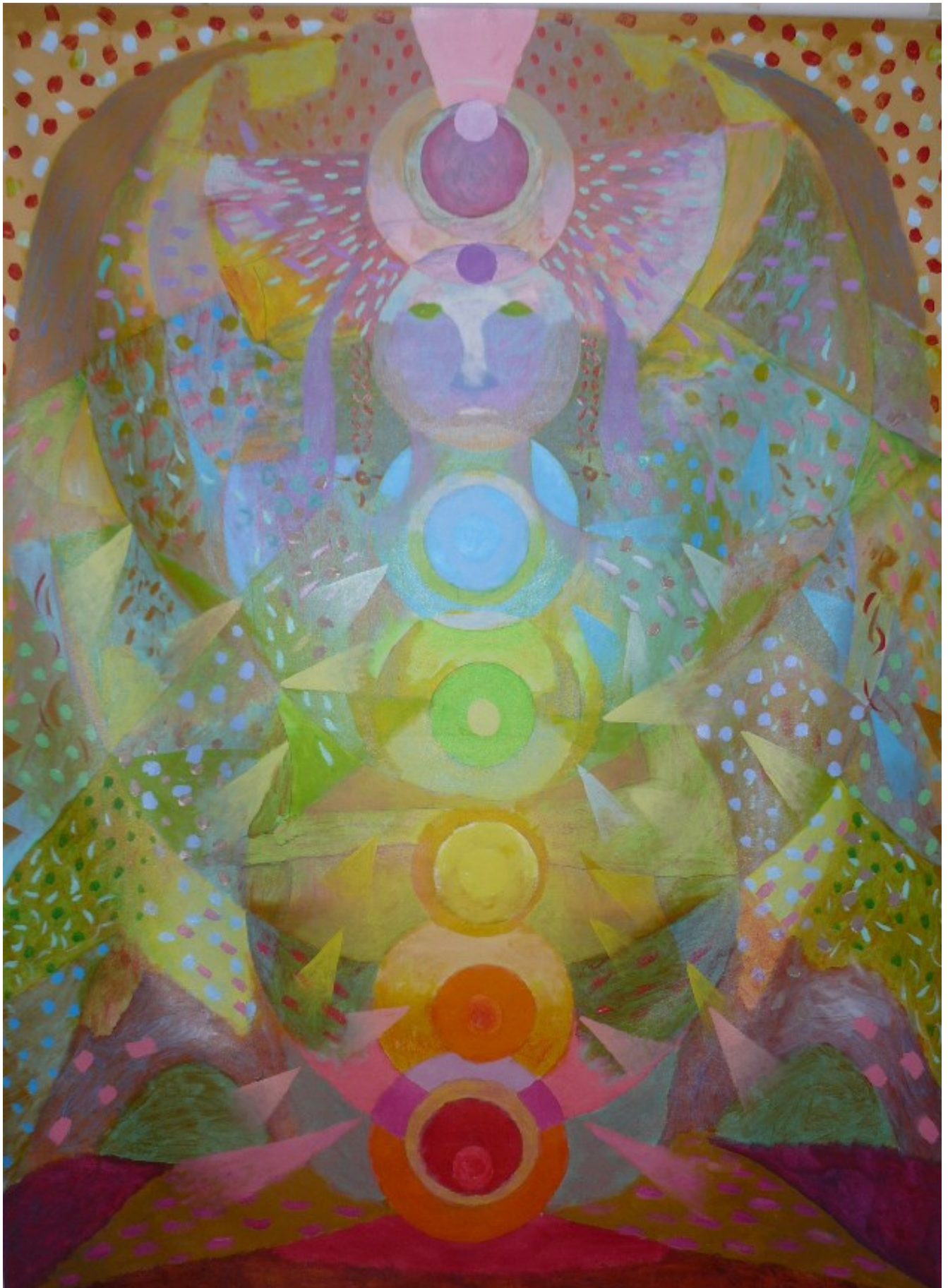
The Scroll Paintings are fine contemporary art taking advantage of the classic scroll presentation format. Easy to display, ship and store, architectural settings are enhanced by color and form.



Scroll Painting 1-14 ~ 52" wide 72" tall – Spherical



Scroll Painting 2-14 ~ 52" wide 72" tall – Particle



Scroll Painting 3-14 ~ 52" wide 72" tall – Primitive

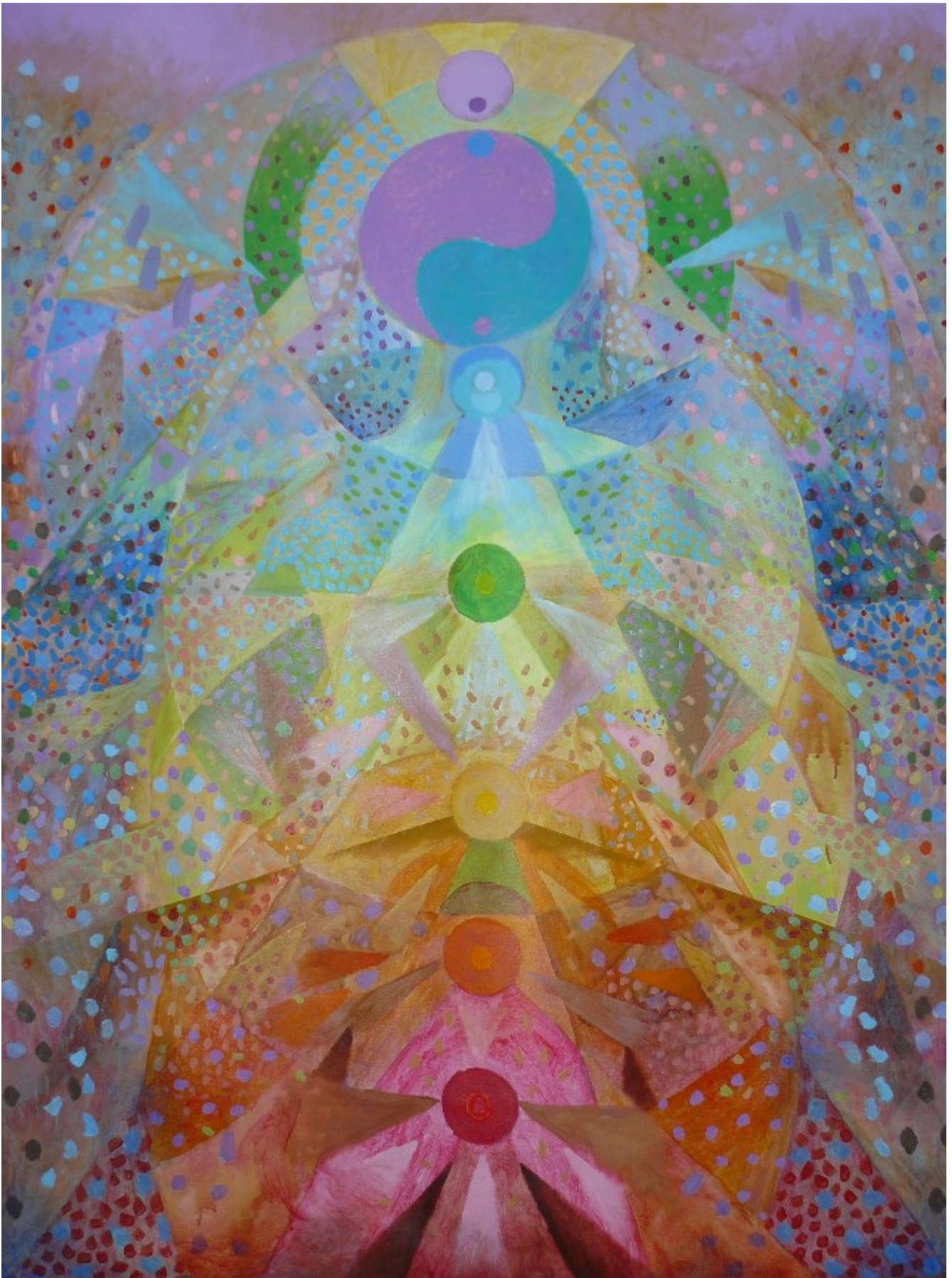


Scroll Painting 4-14 ~ 52" wide 72" tall – Tribe



Scroll Painting 5-14 ~ 52" wide 72" tall – Universal





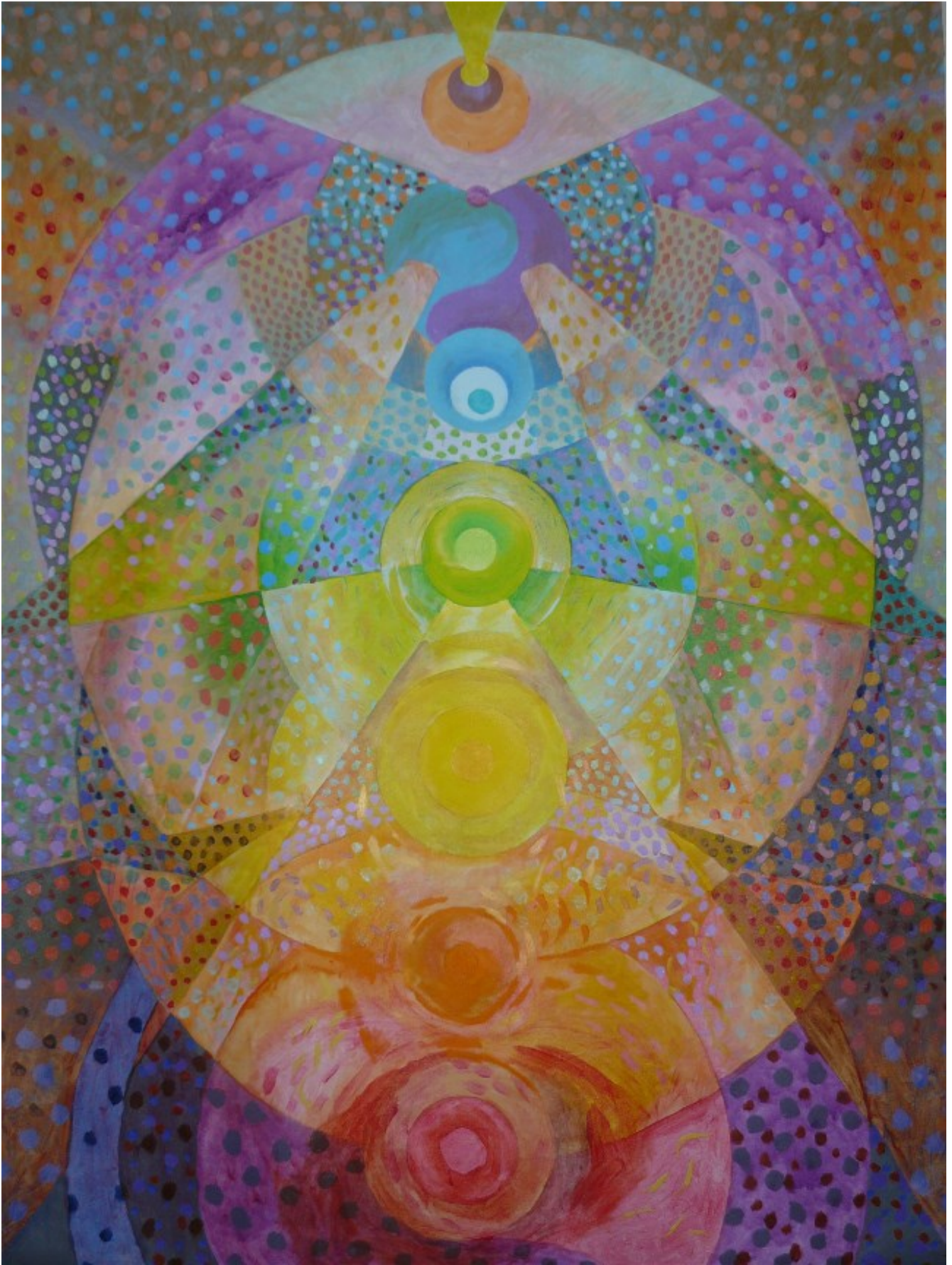
Scroll Painting 6-14 ~ 52" wide 72" tall – Tribe 2



Scroll Painting 7-14 ~ 52" wide 72" tall – Universal 2



Scroll Painting 8-14 ~ 52" wide 72" tall – Symbolic



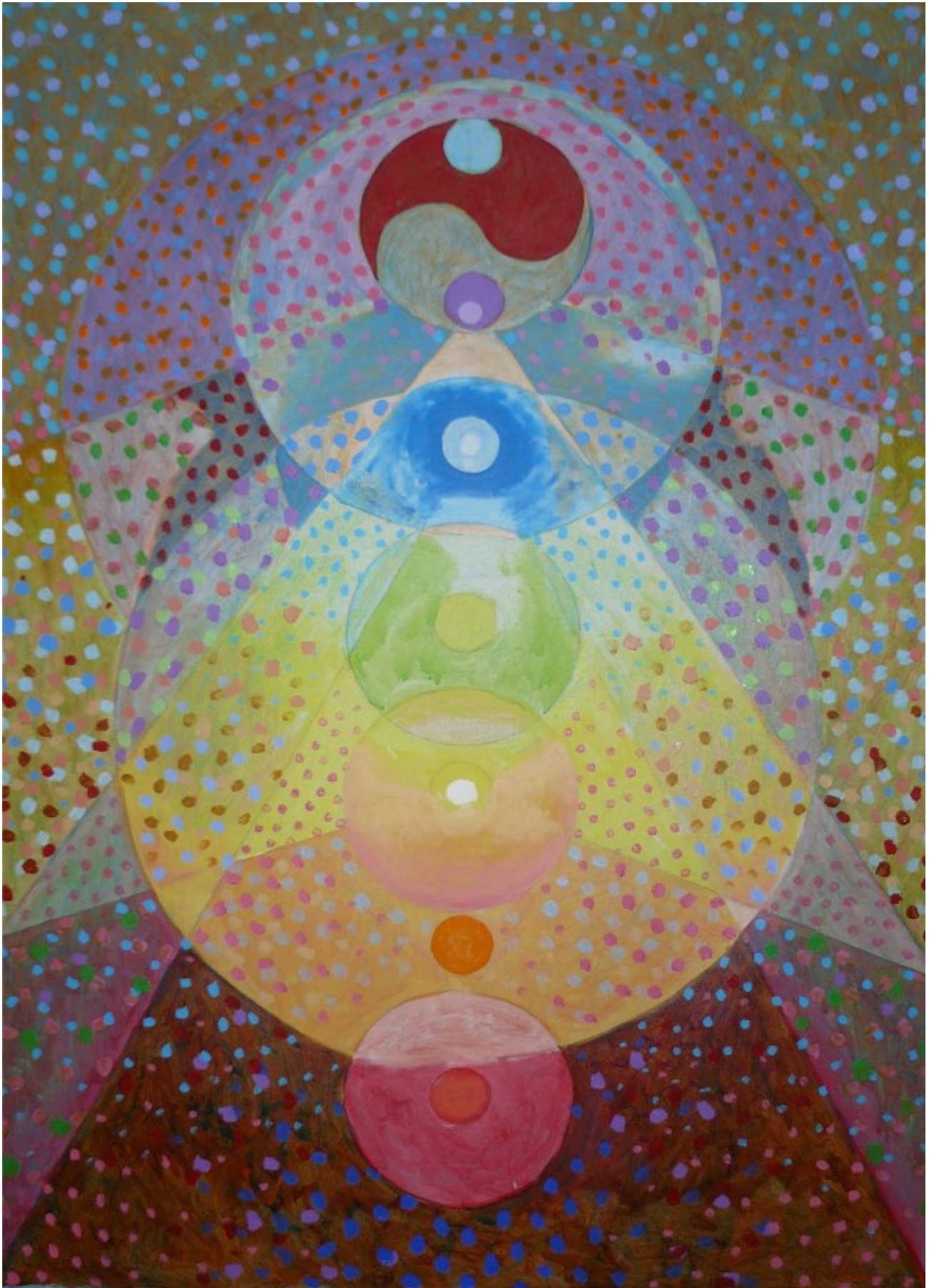
Scroll Painting 9-14 ~ 52" wide 72" tall – Universal 3



Scroll Painting 10-14 ~ 52" wide 72" tall – Universal 4



Scroll Painting 11 - 37" wide 61" tall

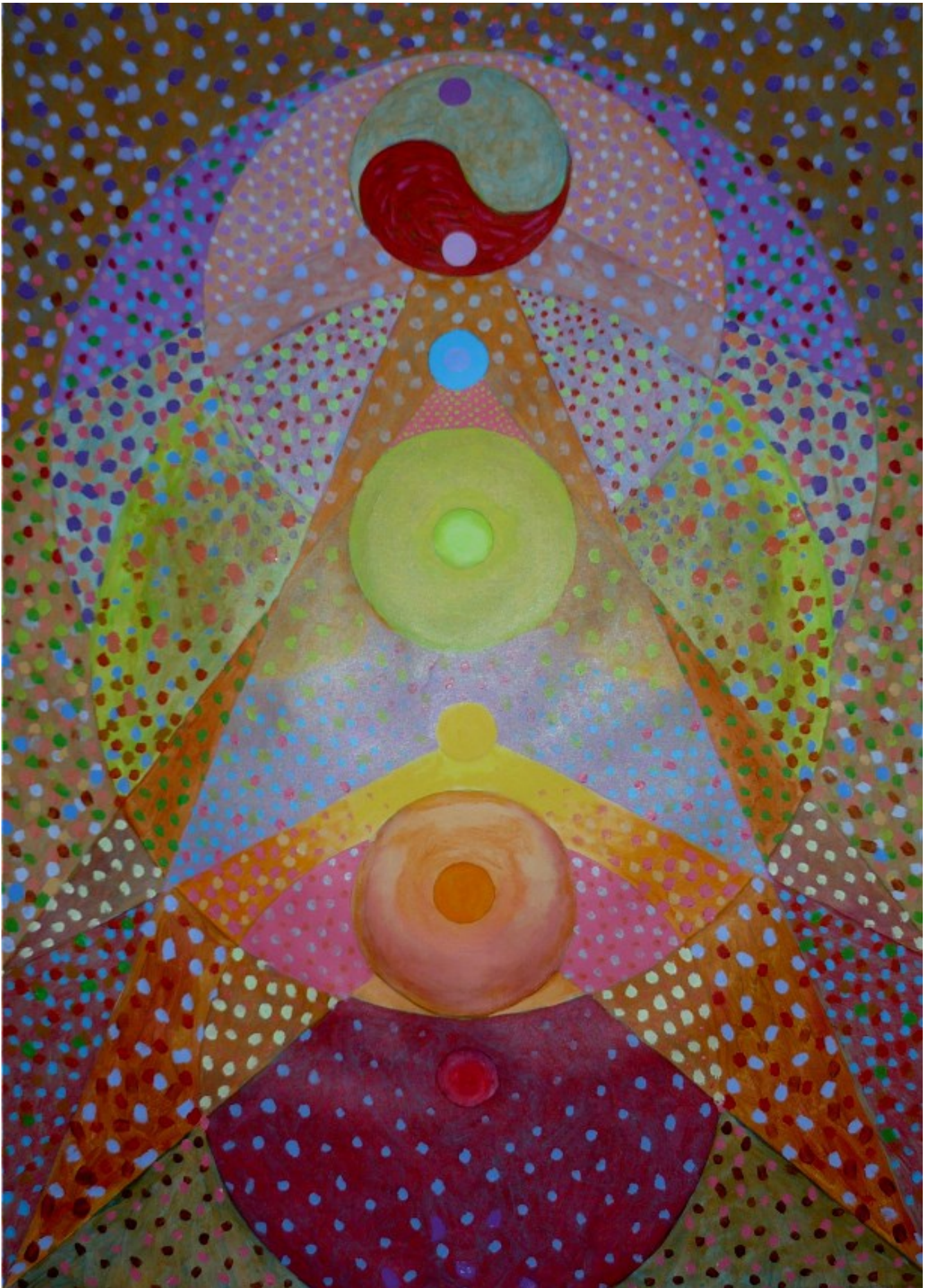


Scroll Painting 12 - 41" wide 58" tall

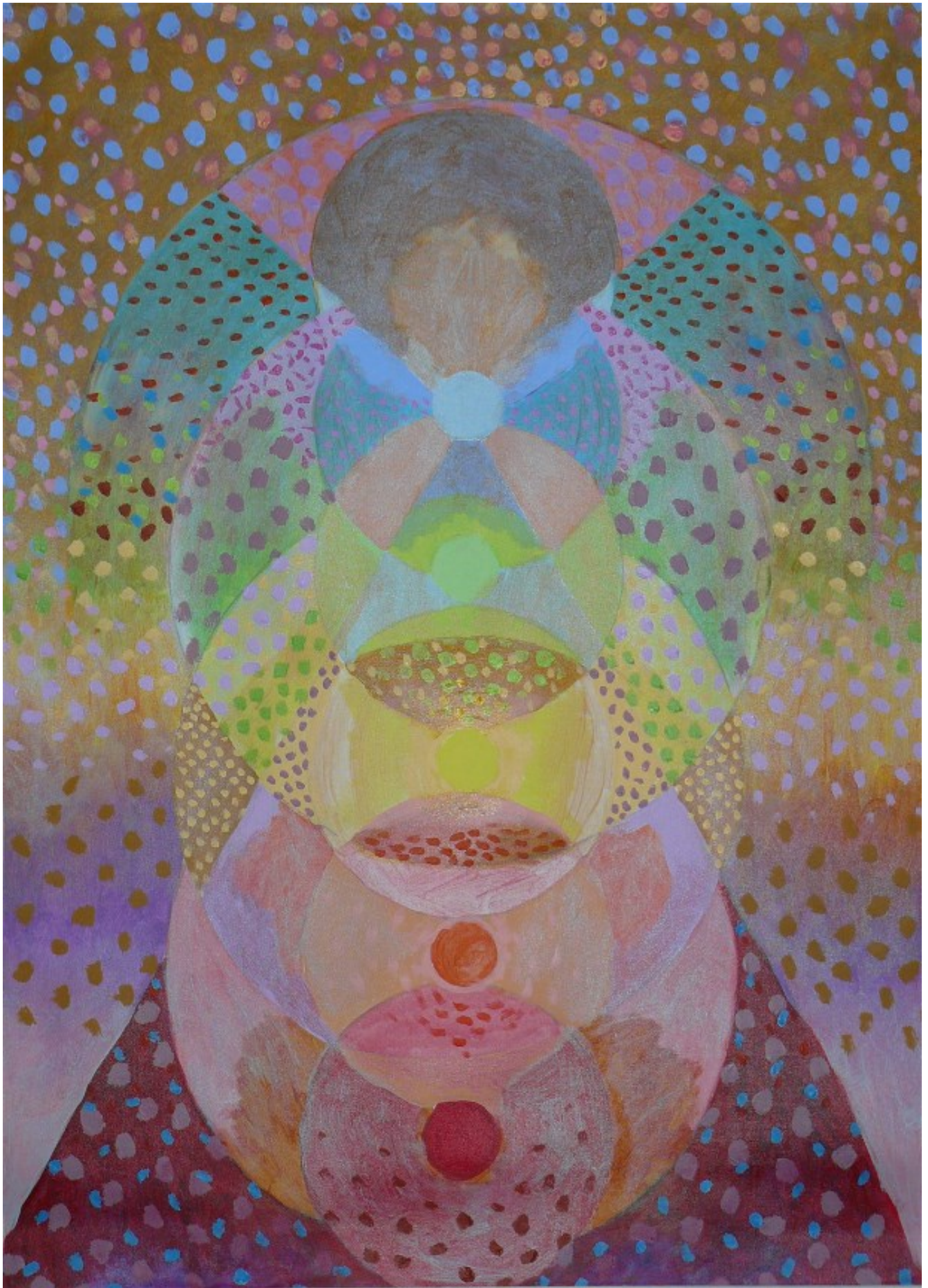


Scroll Painting 13 - 41" wide 59" tall

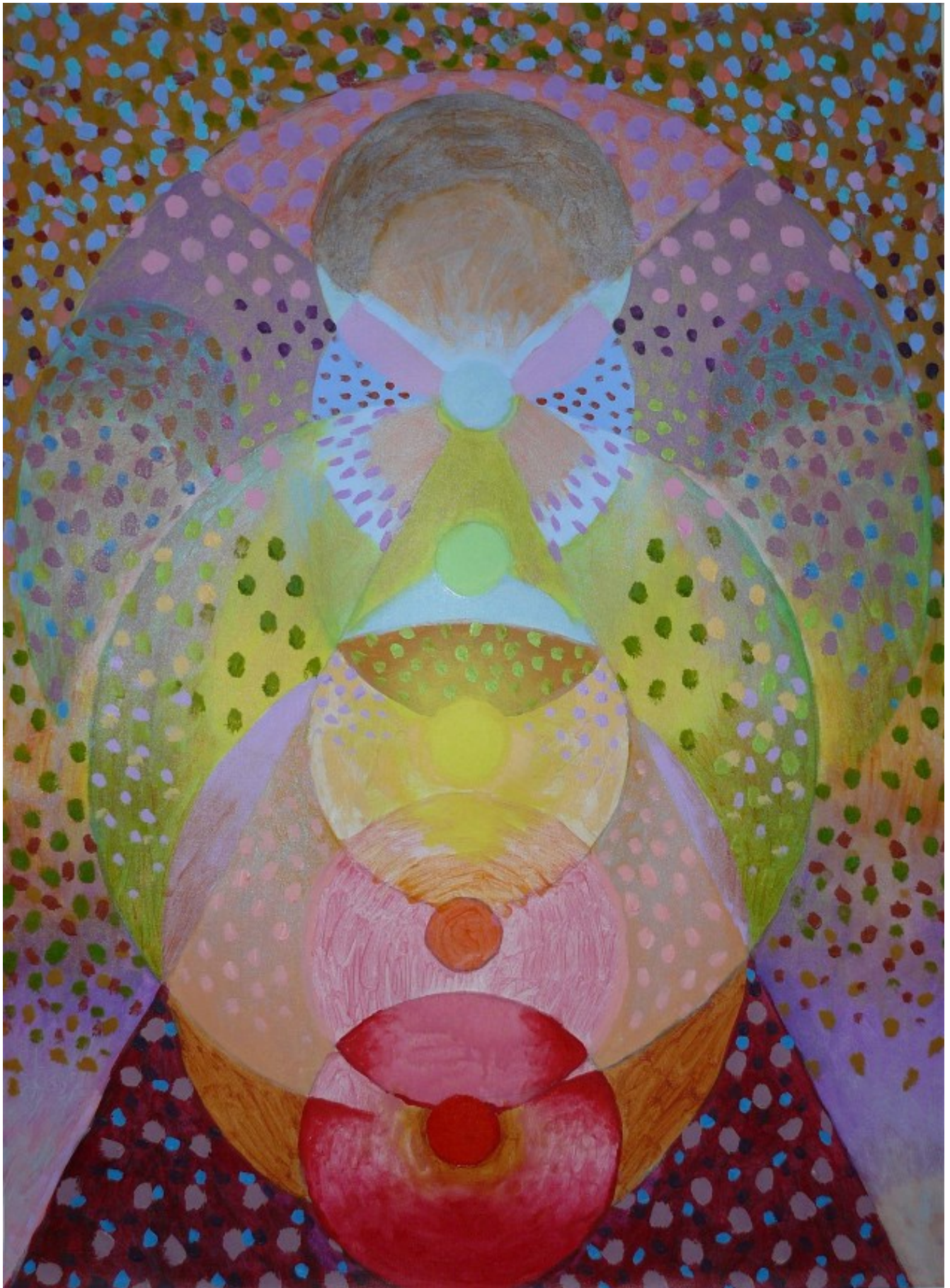




Scroll Painting 14 - 42" wide 59" tall



Scroll Painting S 1 - 30" wide 40" tall



Scroll Painting S 2 - 30" wide 40" tall



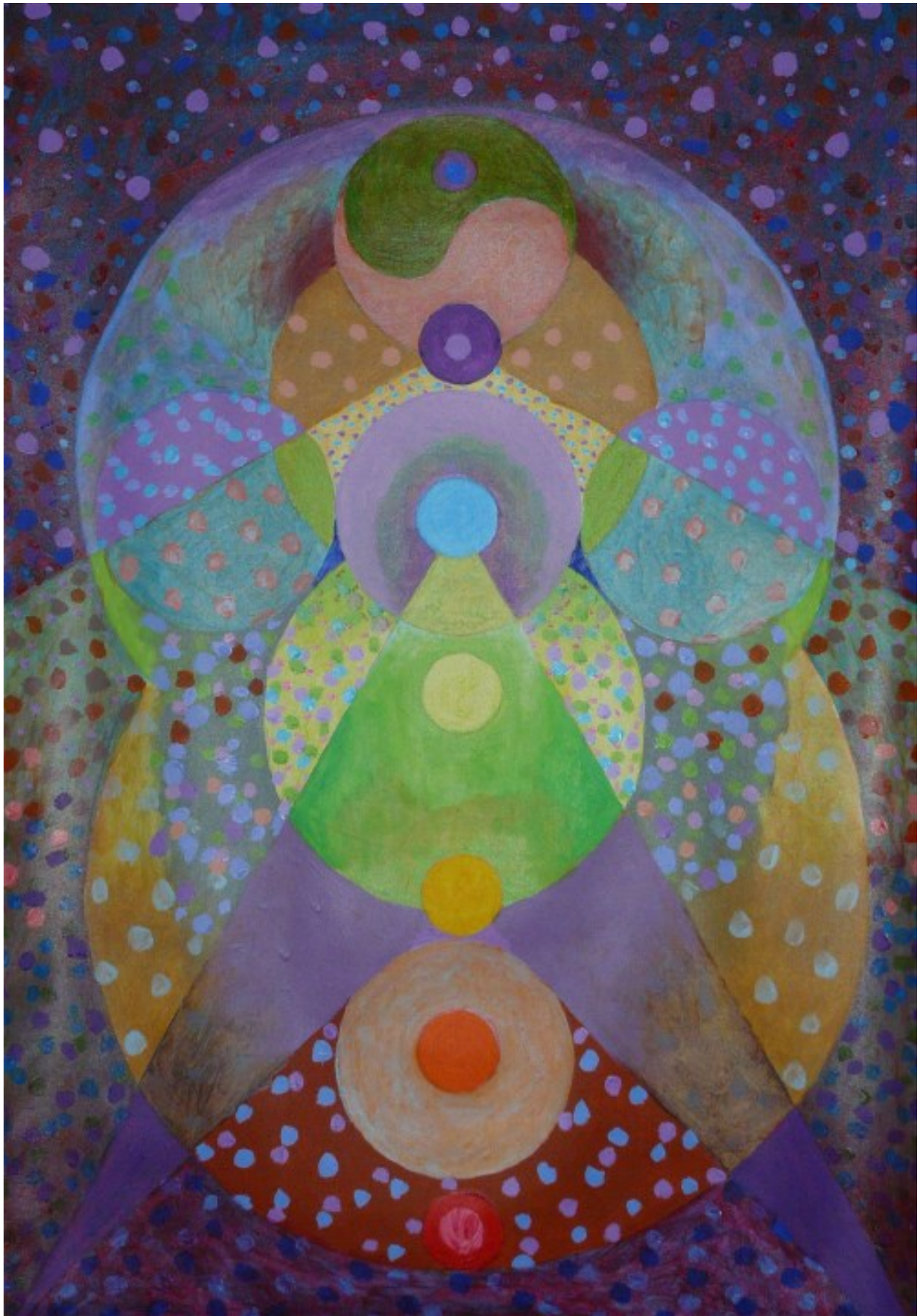
002 - 15 46"x 30" Acrylic on canvas, Scroll Painting



003 - 15 44"x 30" Acrylic on canvas, Scroll Painting



004 - 15 42"x 31" Acrylic on canvas, Scroll Painting



005 - 15 42"x 30" Acrylic on canvas, Scroll Painting



006 - 15 42"x 30" Acrylic on canvas, Scroll Painting





007 - 15 43.5"x 30" Acrylic on canvas, Scroll Painting



008 - 15 41"x 59.5" Acrylic on canvas, Scroll Painting



009 – 15 42"x 59" Acrylic on canvas, Scroll Painting



010 – 15 42"x 58" Acrylic on canvas, Scroll Painting



011 - 15 42"x 30.5" Acrylic on canvas, Scroll Painting



012 – 15 37"x 30" Acrylic on canvas, Scroll Painting



013 - 15 43"x 30" Acrylic on canvas, Scroll Painting



014 - 15    42"x 30" Acrylic on canvas, Scroll Painting



# *Chakra Energy* series

## Scroll Art

Winding Up Scroll Art - Always use the White cotton gloves (For use when handling art work.)

Always wind the picture side outside. Use two hands keeping the canvas snug. Hold the top poll to wind on to. When it is all wound up, use the Velcro strips to hold the scroll together. You may then use a cloth wrap, again held in place with Velcro wraps. You may elect a stitched fabric case for long term storage. A storage tube may be used for added protection. This is especially advisable for transportation.

To see a U-Tube demo Visit: [http://glenriver.com/art/poll\\_paintings.php](http://glenriver.com/art/poll_paintings.php)

There are two hanging solutions included.

Small brass swivels are located on each side of the top scroll poles. They are 3” toward the center from each end of the poll. Inside the plastic bag find included:

1. a transparent plastic cord . Use this for hanging from a single point wall hanger.
2. S hooks, for quick connectors
3. White cotton gloves (For use when handling art work.)  
Loop filaments attached to brass swivels for 2 point wall attachment.

